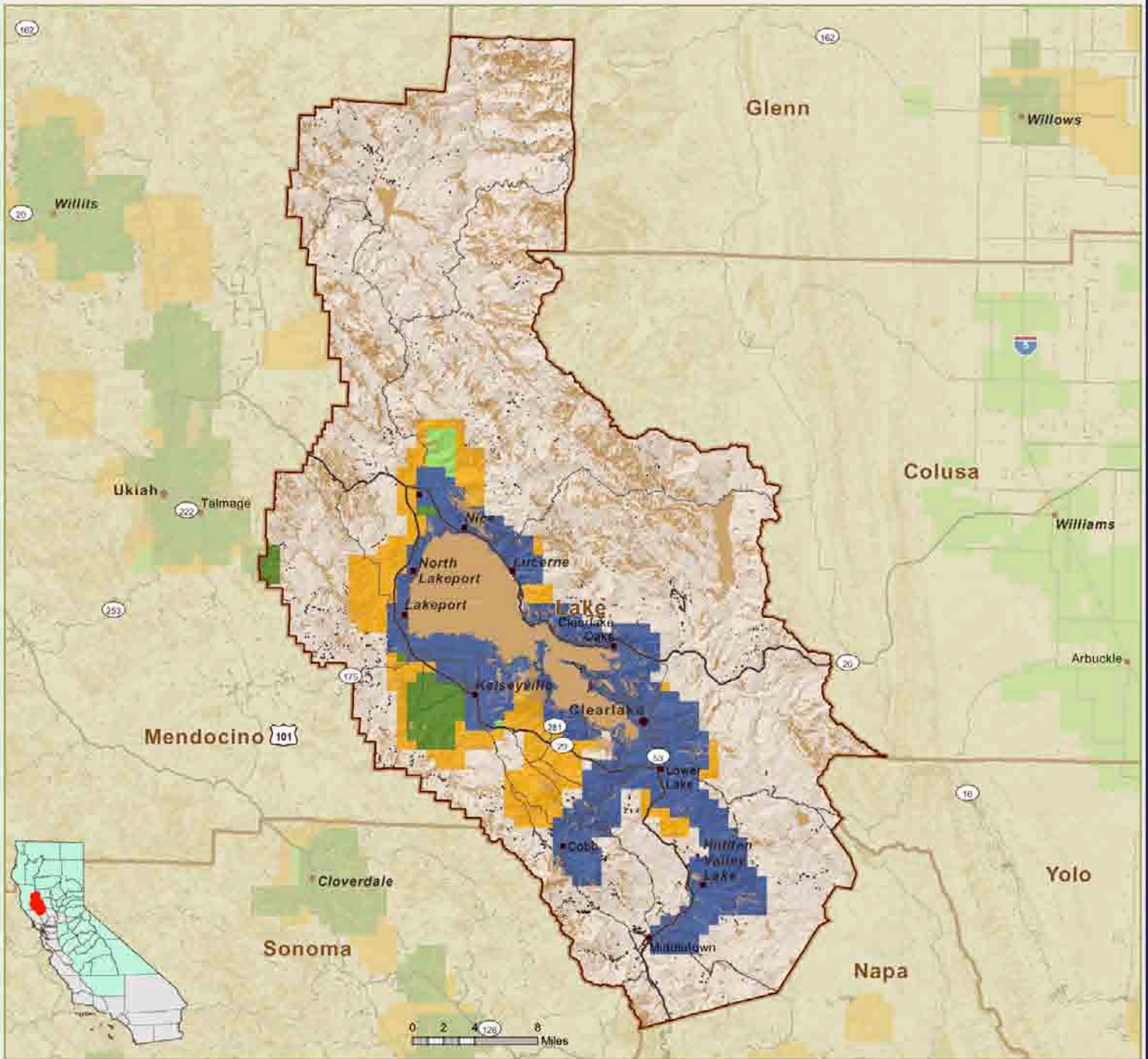
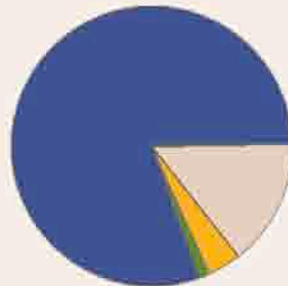


Wireline Broadband Availability - Lake County



Availability of Speed (Area)

- No Availability
- 5 to 10 Mbps
- 0.5 to 1 Mbps
- 10 to 100 Mbps
- 1 to 5 Mbps
- 0.1 to 1 Gbps



- Main Road
- Highways
- Counties
- Unpopulated Areas
Unpopulated Areas include lakes, rivers, steep slope and barren landscape.
- Housing Units with No Availability
Based on modeled housing units



Source Data Providers:
 • California Emerging Technology Fund
 • Office of Statewide Health Planning and Development
 • Business Transportation and Housing Agency
 • United States Geological Survey (USGS)

Percent Availability (Housing Units)

Percents availability based on number of housing units.

